

System's Advocacy in A Coordinated Community Response

Katherine Eagle, Executive Director
Mending the Sacred Hoop
Tina Olson, Consultant

Overview

- *The information contained in this workshop provides an understanding of a Coordinated Community Response from a critical analysis that moves beyond individual advocacy.*



Principles of a Coordinated Community Response

CCR is an interagency, multi-disciplinary effort to change the climate of tolerance of domestic violence by institutionalizing practices that centralize victim safety and offender accountability in intimate partner relationships

Necessary Advocacy & Organizing Elements to promote change

Personal

- Solid understanding of the issues
- Establishing trust through confidentiality
- Personal experience relating to the issue
- Access to information and resources
- Ability to listen
- Ability to act

Institutional

- Solid understanding of the issues
- Educating practitioners
- Knowledge of institutional practices and strategies
- Knowledge of essential players who can effect change – creating allies
- Listening to front line workers

Individual Advocacy is Reactive

- Remember, when we are advocating for a survivor of domestic/sexual violence an advocate is:
 - to act as the biased supporter of Indian women experiencing violence, advocating for their expressed interests, including safe space and other resources to regain control over their lives.
 - Why are the terms “biased” and “expressed” important in this definition?

Institutional Advocacy – Systems Advocacy – Proactive

- Establish good working relationships with law enforcement, courts, social services, medical and mental health community and child protection.
- Knowledge of relevant laws, protocols, procedures and policies effecting battered women:
 - Tribal Code – Language
 - Law Enforcement – Police Dept. protocol, arrest policy
 - Social services – policies relating to battered women
 - Inter-agency meetings, cross-training, community education

Crime Victim Witness

Agencies

- FBI
- City, County Prosecutor
- USAO

Victim Specialist Role

- Provides a “Bill of Rights”
- Response after an arrest & indictment
- Covers some expense for victims of violence
- Accountable to the office
- Victim notification
- Limited confidentiality

Limited Confidentiality Statement

- *As your Victim Specialist, I certainly am here to assist you as you go through the criminal justice process. However, you should know that I work as part of team with the FBI and the USAO. Discussions you may have with me may not be considered completely confidential. As part of a team, there may be times when I may need to share information you provide me with other teams members. This is especially important if you share information regarding your safety, a medical emergency.....*
- *Safety is presumed by CONVICTION*

Institutional Challenges & Advocacy

- *Losing Perspective*
- *Lens from the Outside*
- *Lens from the Inside*
- *Police & Advocacy*
- *Responding w/law enforcement*
- *Confidentiality*

What is at Risk within the Criminal & Civil Justice System for Battered Women?

- Autonomy
- Perceptions; Why Women Stay, others
- Safety
- Credibility
- Re-victimization
- Minimization

A Case for Intervention: Jessica's Story

- 27 year old woman
- Four children
- Homemaker
- 13 police calls
- Shot her husband

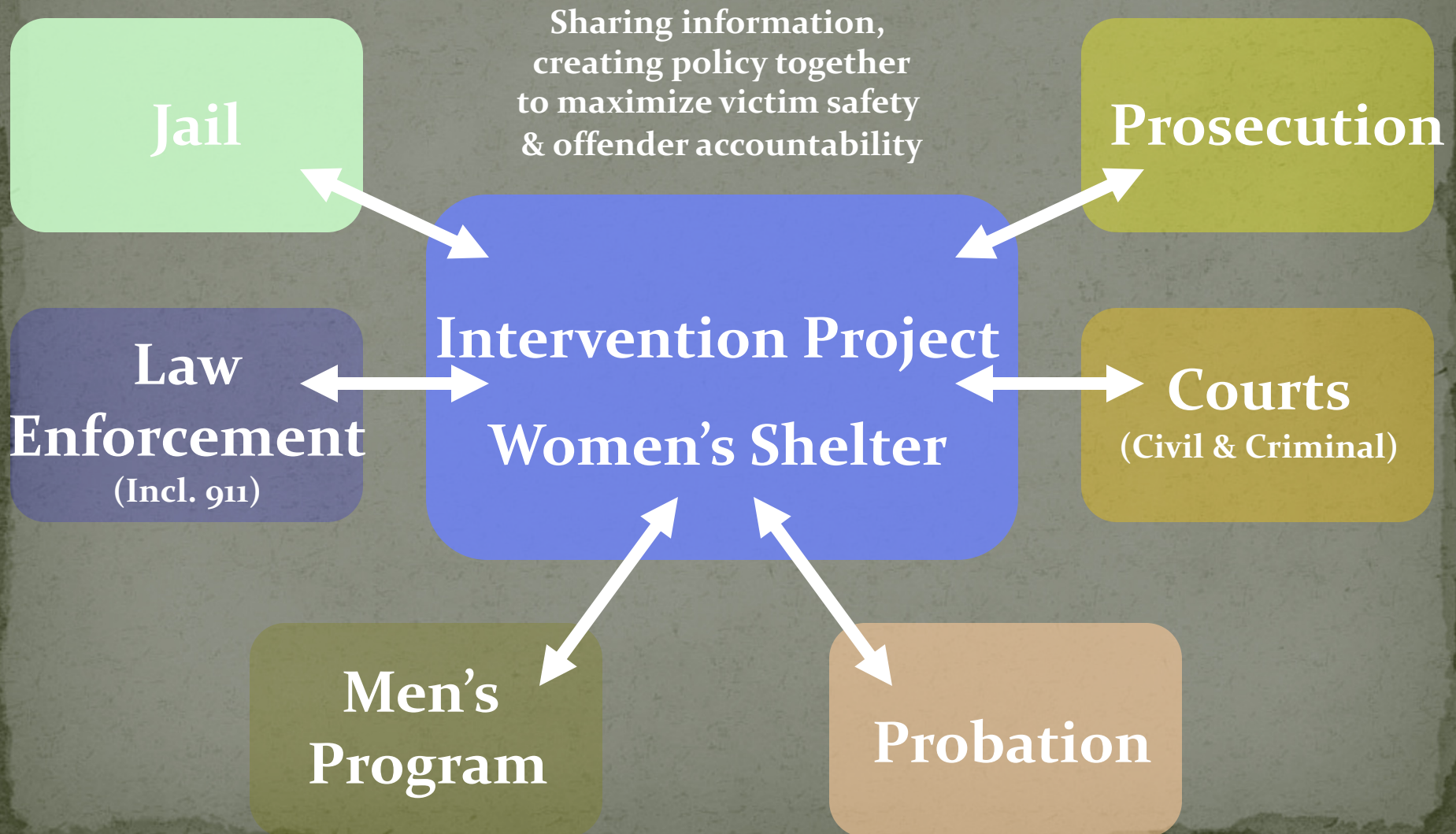
Develop a Common Framework About Domestic Violence

- Understand that each person or profession will have their own theory of why violence happens;
- Start with developing a common ground and perspective;
- Commit to ongoing training and education

Coordinated Community Response

An interagency effort to change the climate of tolerance of battering by institutionalizing practices and procedures which centralize victim safety and offender accountability in domestic assault related cases.

Coordinated Community Response (Criminal Justice System)



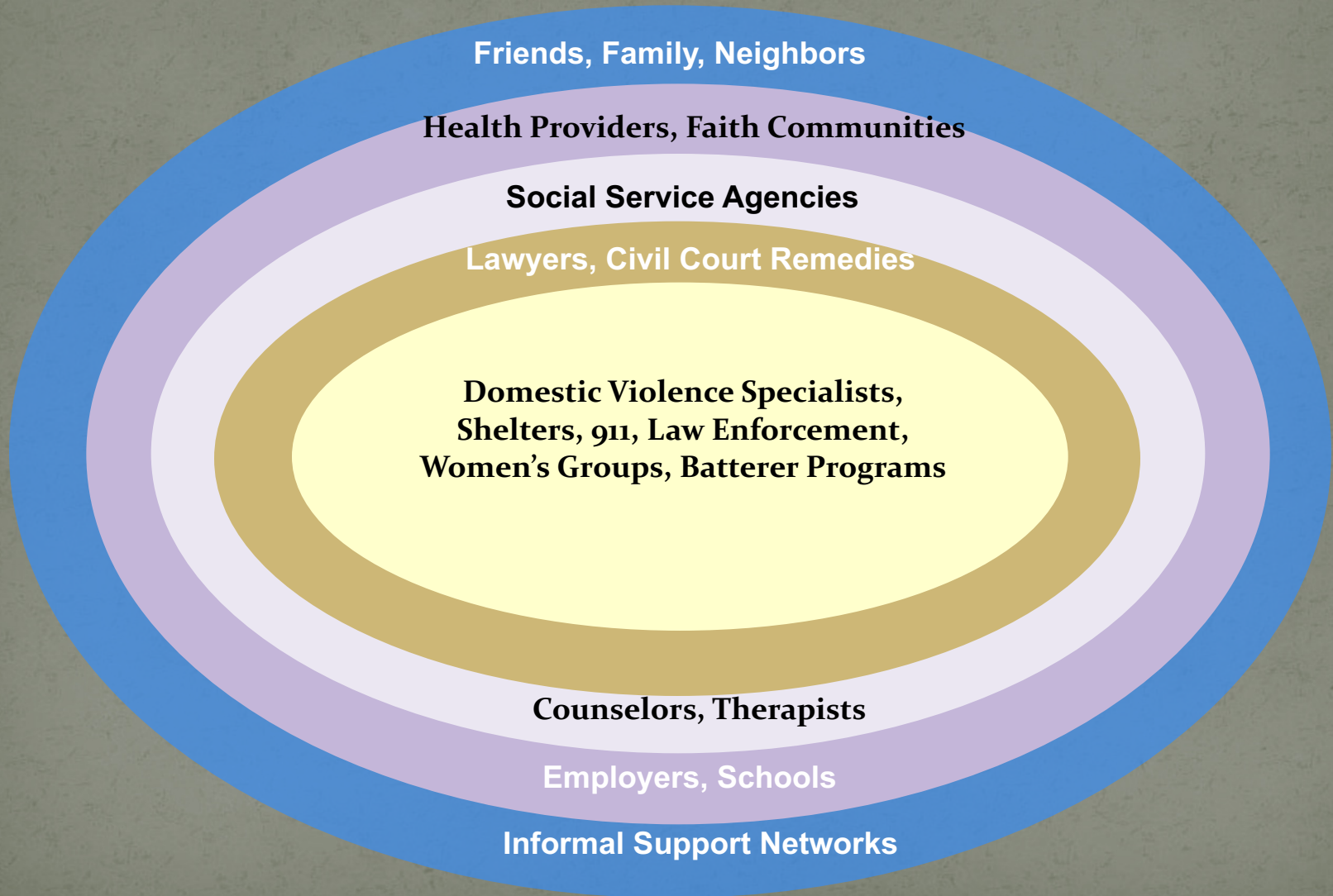
A Shared Understanding

- The tribe must impose controls on the offender to stop the violence
- The coercive power of the tribe should be restricted to the illegal activity of the offender
- Victims are limited in their ability to hold offenders accountable
- Battering creates power differences that need to be accounted for with every intervention

Who are the Allies & Key Players to bring to the table?

- Recruit one or two tribal council members as part of the CCR team; they play a vital link with tribal government & influence
- Invite key players that have authority to implement policies (chief of police, prosecutor, shelter director, batterer's program, etc)
- Battered women must be part of the CCR; in a separate group or integrated

Where do domestic violence victims seek help?



Evaluate the Process

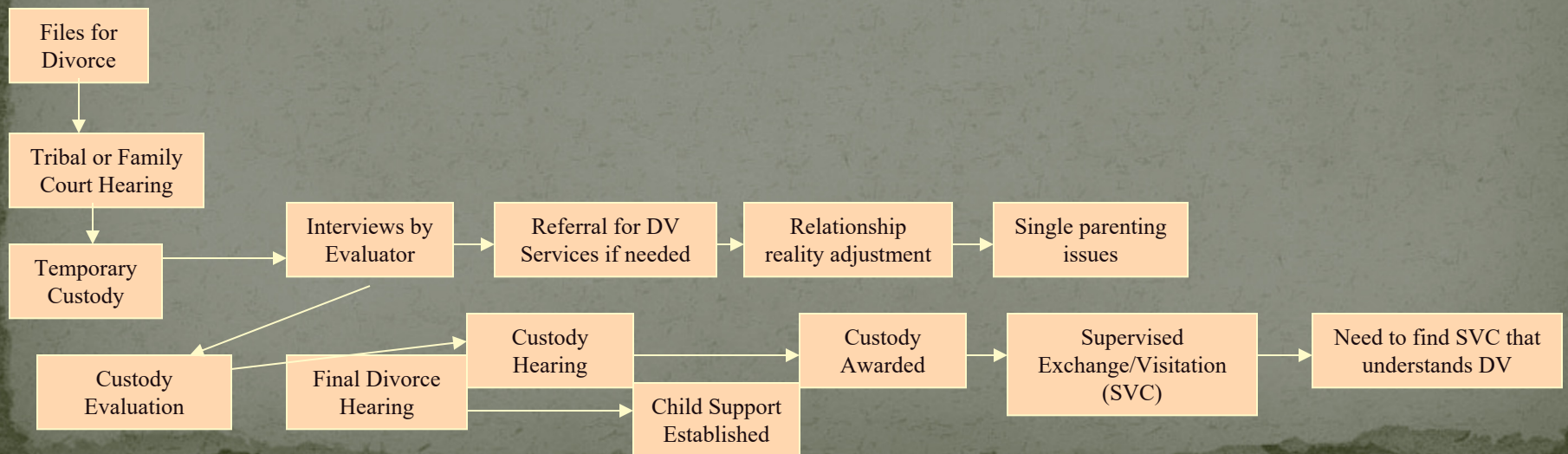
- Elicit the help of a woman's advisory group to help evaluate the effectiveness of new policies, goals & objectives
- Has the project met it's goals and objectives; why or why not?
- Have the number of domestic violence cases increase or decreased?
- What is the change and why?
- What is the recidivism rate?
- Are officers complying with the code when responding?

Mapping the Domestic Violence Response

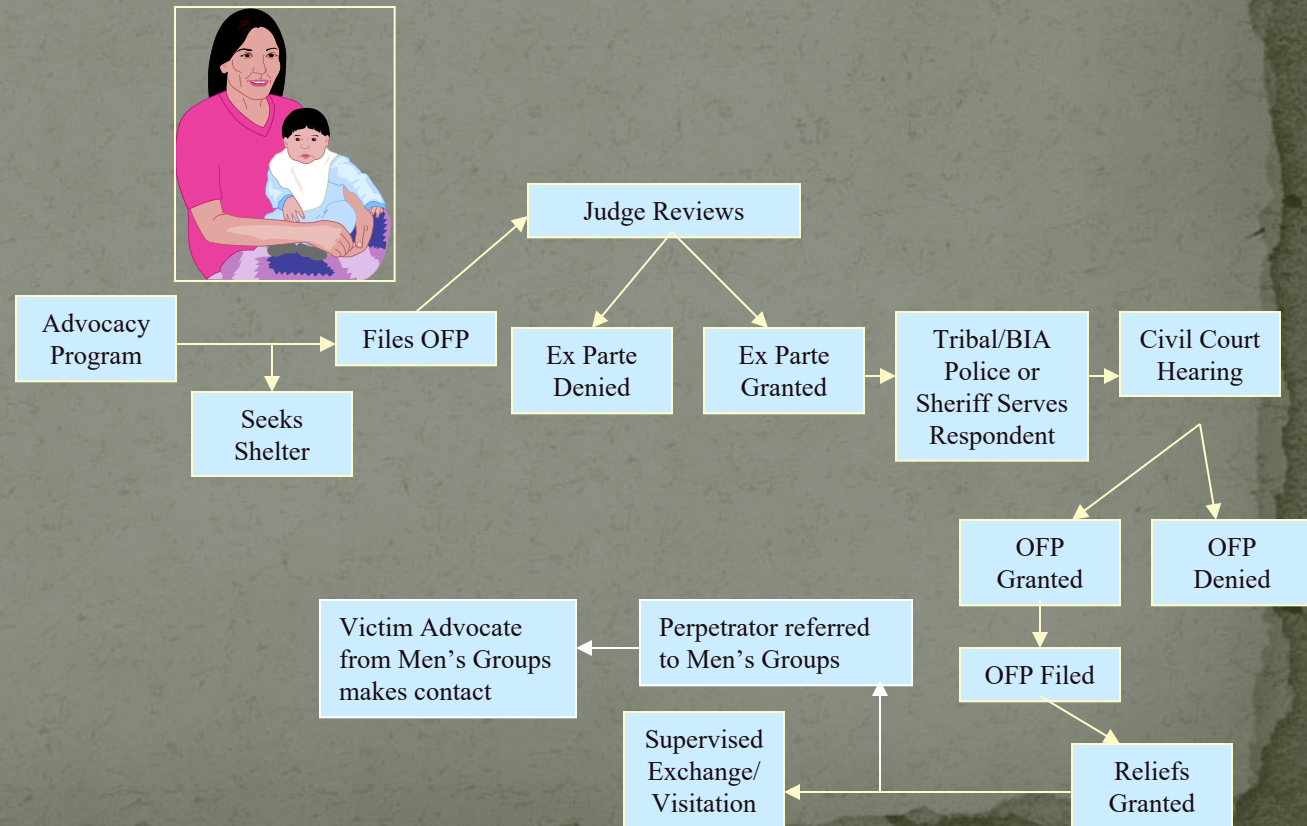


- Women bring complex and immediate needs for safety
- We need to work to enhance the safety of battered women while recognizing how multiple systems play a role in her life...

CHILD CUSTODY MAP



ORDER FOR PROTECTION – CIVIL COURT PROCESS



- Homeless shelter
- Churches & charities
- Programs for rentals
- Community help network

Services offered for possible reconciliation with THA or alternative housing options.

Tribal Housing Authority (THA) Notified

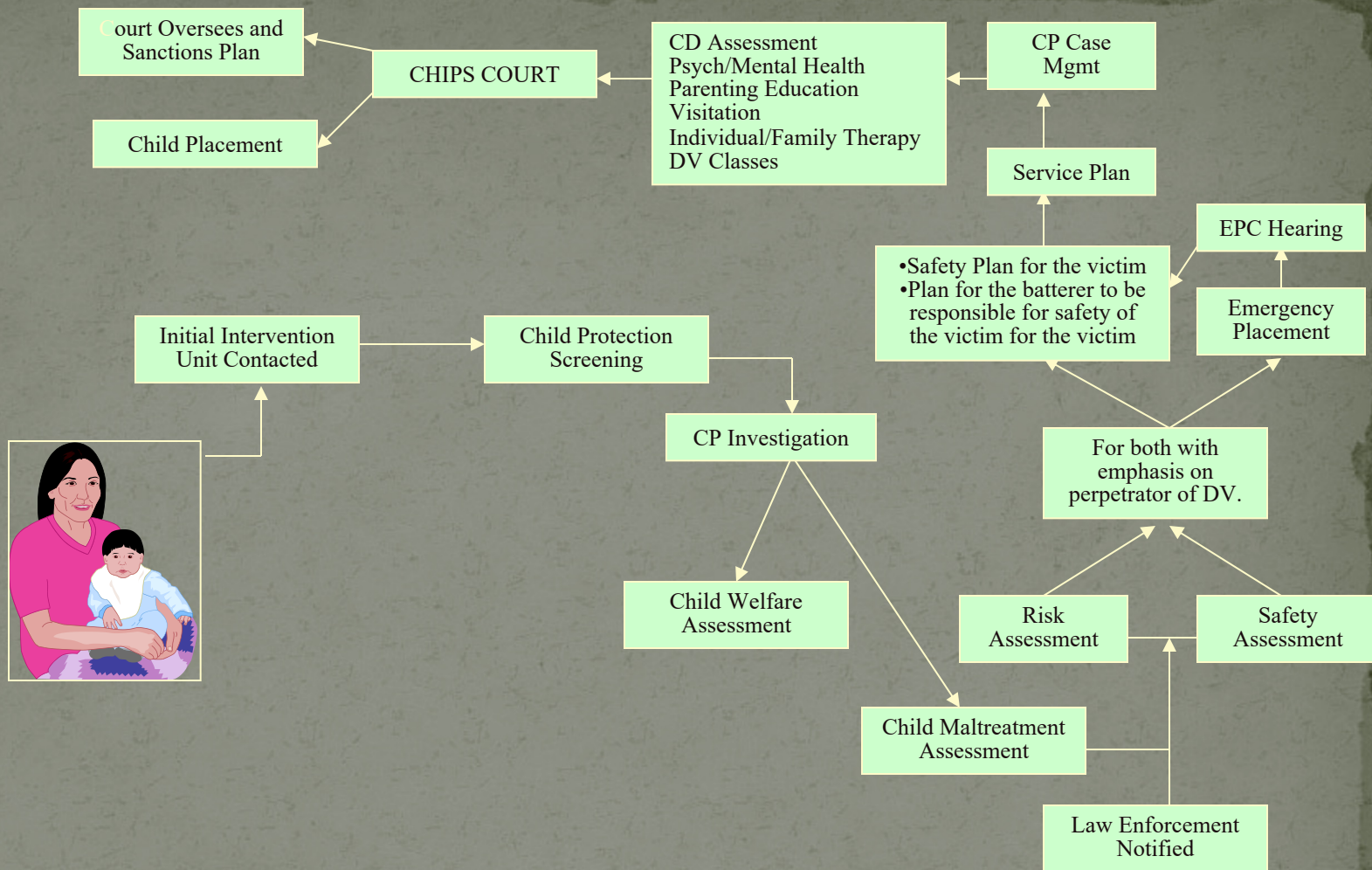
Warning Given

Eviction Hearing

Tribe/BIA or Sheriff Evict

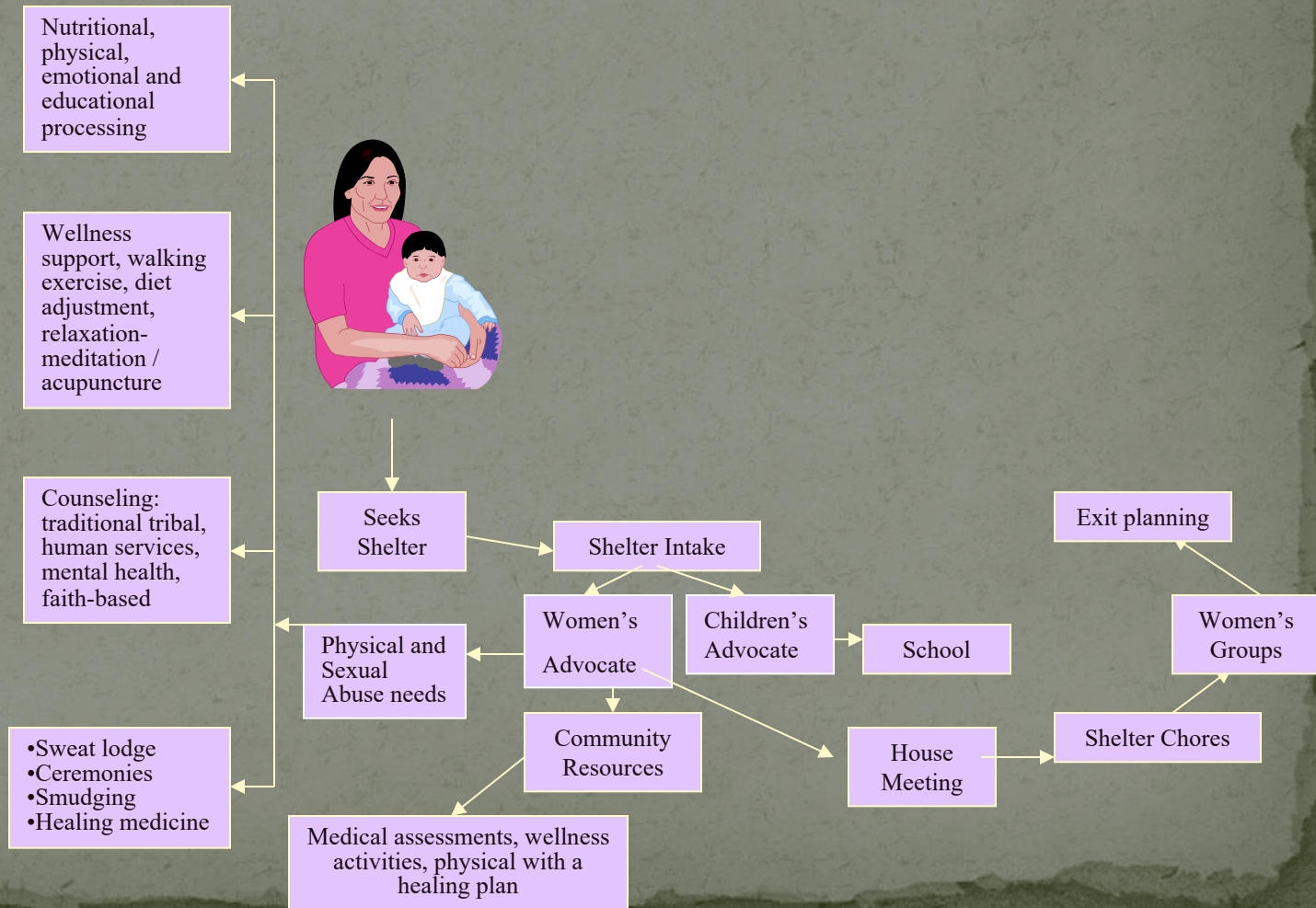


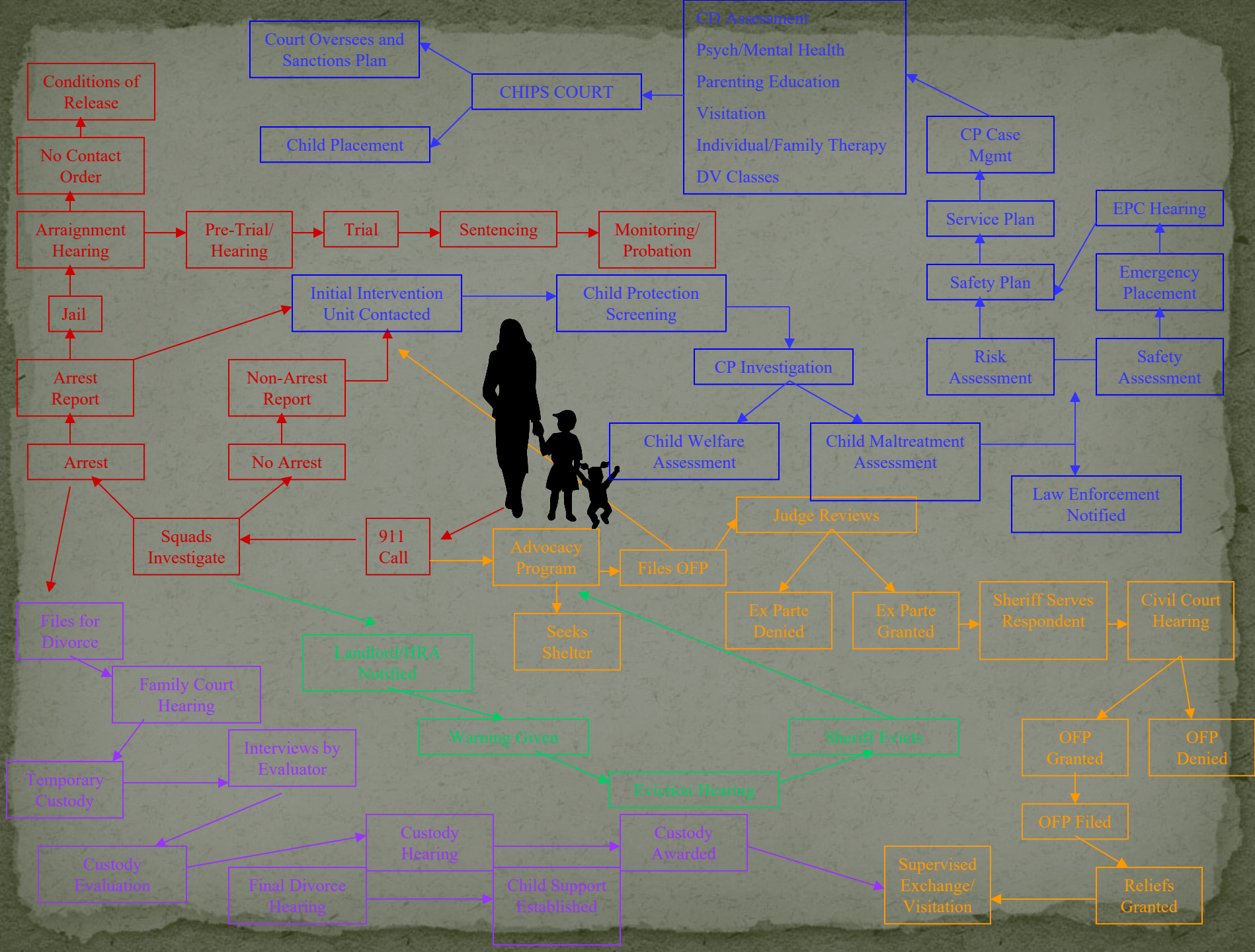
HOUSING MAP

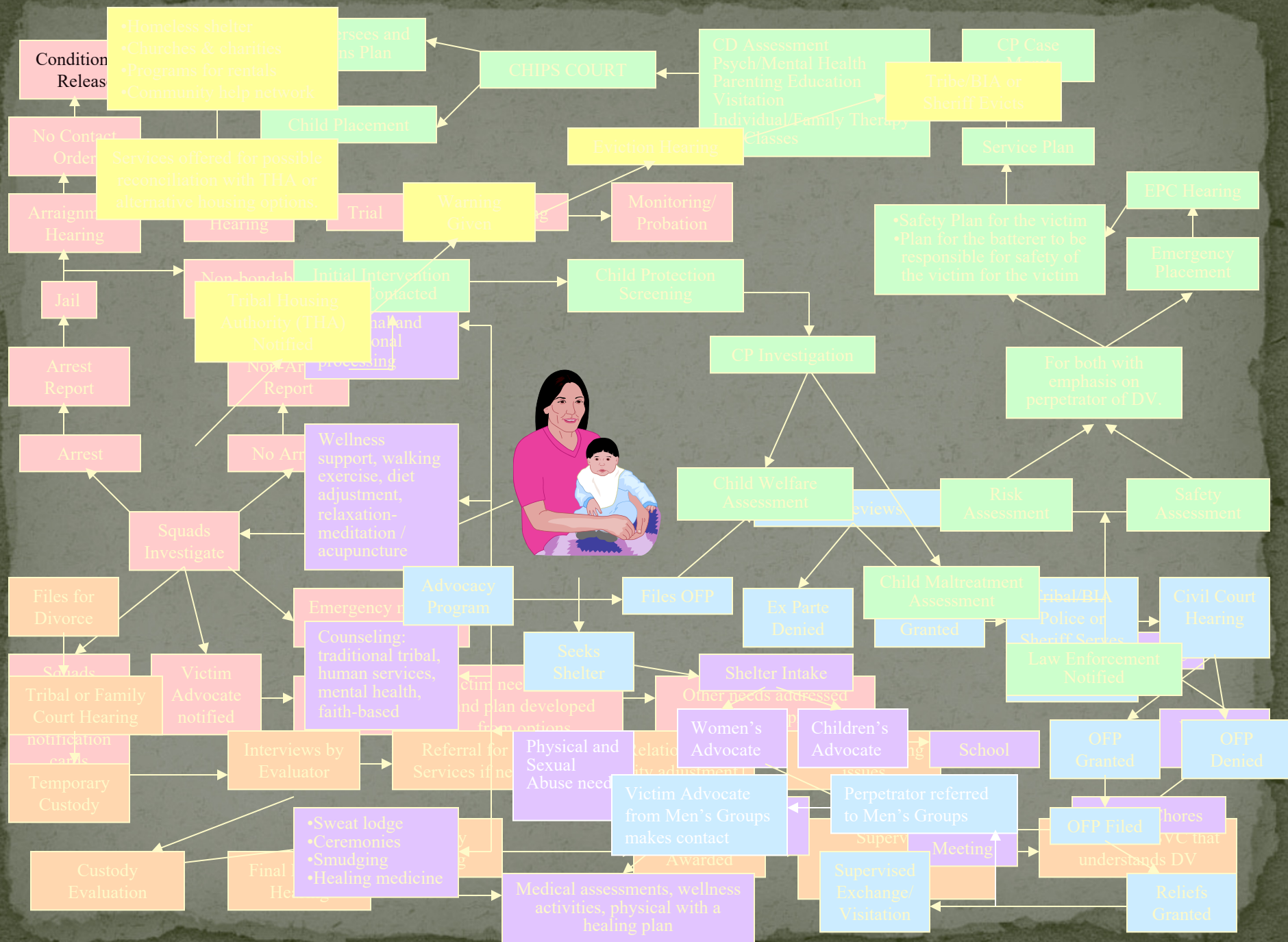


CHILD PROTECTION MAP

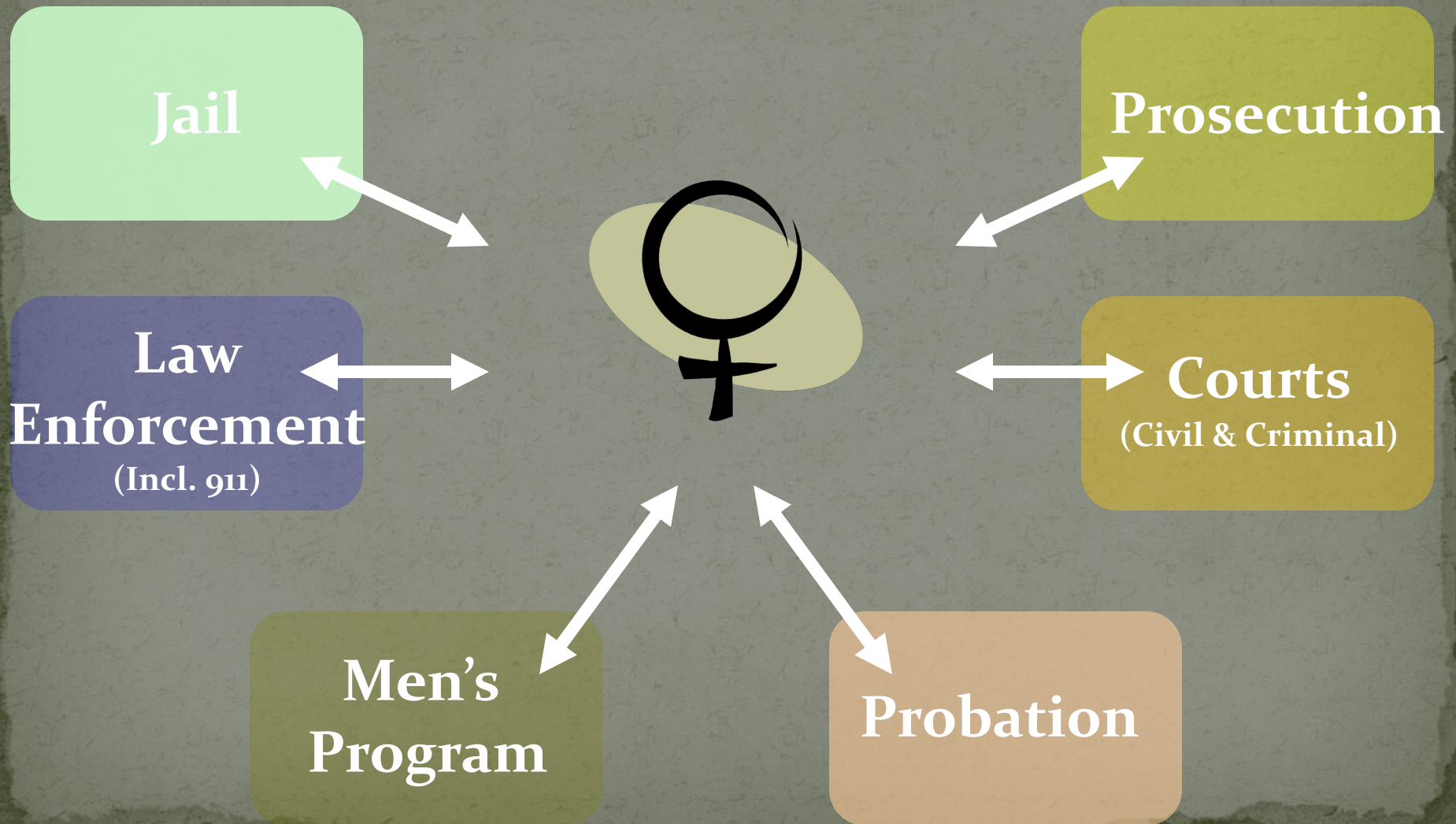
SHELTER MAP







Accountability to Women Who Have Been Battered



Things to Think About

- Listening to women's voices
- Reality check for battered women (another stone in her backpack)
- Protecting privacy & confidentiality
- Losing the focus of "women's safety" in our busy work
- Creating a Coordinated Community Response is a work in progress

Mending The Sacred Hoop



202 W. 2nd St.
Duluth, MN 55802

218-623-4667
1-888-305-1650

www.msh.org

This project was supported by Grant No. 2015-TA-AX-K028, awarded by the Office on Violence Against Women, U.S. Department of Justice. The opinions, findings, conclusions, and recommendations expressed in the publications/program/exhibition are those of the author(s) and do not necessarily reflect the views of the U.S. Department of Justice, Office on Violence Against Women.